



Element / Universal

The special geometry of the enclosure half-shells offers easy mounting in the interior

- 12 or 3 sizes respectively
- With air vents and/or recessed membrane keypad area, depending on design
- S version with snap lock
- A version with aluminium front panel in lid
- Depending on the model, lid screwing systems from above and quick-release fasteners are available



Colour	Lid: light grey, similar to RAL 7035; base graphite grey, similar to RAL 7024; special colours on request
Protection class	Plain: IP 40/DIN EN 60529; with air vents: IP 30/DIN EN 60529
Enclosure material	PS; for details see Technical Information

F version: With recessed area of 1 mm in upper section for mounting of membrane keypads

VL version: With vertical, injection-moulded air vents

A version: With aluminium front panel in the cover area of the lid



Element



Enclosure, plain

Model	Order no.	A	B	C	c1
E 406	05406000	65	50	30	24
E 408	05408000	65	50	45	39
E 410	05410002	100	50	25	19
E 420	05420002	100	50	40	34
E 430	05430002	120	65	40	34
E 435	05435000	120	65	65	59
E 440	05440002	150	80	55	49
E 445	05445000	150	80	80	74
E 450	05450002	188	110	70	64
E 460	05460000	188	110	100	94
E 470	05470000*	188	110	120	114

Scope of delivery: Lid, base, 4 fixing screws

Note: * = Available on request.

Accessories: See following pages.



Enclosure, closed, with membrane keypad area

Model	Order no.	A	B	C	c1
E 406 F	05406700*	65	50	31	24
E 410 F	05410700*	100	50	26	19
E 420 F	05420700*	100	50	41	34
E 430 F	05430700*	120	65	41	34
E 440 F	05440700*	150	80	56	49
E 450 F	05450700*	188	110	71	64

Scope of delivery: Lid, base, 4 fixing screws

Note: * = Available on request.

Accessories: See following pages.



Enclosure with air vents

Model	Order no.	A	B	C	c1
E 406 VL	05406900	65	50	30	24
E 440 VL	05440200*	150	80	55	49
E 450 VL	05450200	188	110	70	64

Scope of delivery: Lid, base, 4 fixing screws

Note: * = Available on request.

Accessories: See following pages.



Enclosure with air vents and membrane keypad area

Model	Order no.	A	B	C	c1
E 410 F VL	05410800*	100	50	26	19
E 420 F VL	05420800*	100	50	41	34
E 430 F VL	05430800*	120	65	41	34
E 440 F VL	05440800*	150	80	56	49
E 450 F VL	05450800*	188	110	71	64

Scope of delivery: Lid, base, 4 fixing screws

Note: * = Available on request.

Accessories: See following pages.

Element

Enclosure with snap lock

Model	Order no.	A	B	C	c1
E 434 S	05434000	188	110	40	34

Scope of delivery: Lid, base, moulded-on snap lock

Note: See following pages for accessories.



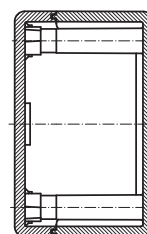
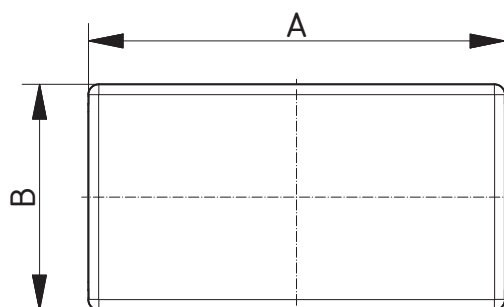
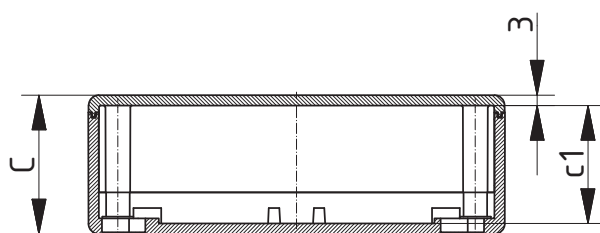
Enclosure with front panel

Model	Order no.	A	B	C	c1
E 430 A	05430500*	120	65	40	33

Scope of delivery: Lid with aluminium front panel, base, 4 fixing screws

Note: * = Available on request.

Accessories: See following pages.



Element accessories



Wall brackets

Model	Order no.	Note
E-WL	25001500	For E 406-E 450
E-WL	25001600*	For E 460-E 470

Scope of delivery: 1 set = 4 pieces

Note: * = Available on request



Quick-release fastener

Model	Order no.	Note
E-SV	25001700	For E 435, E 440 VL, E 445, E 450 VL, E 460, E 470

Scope of delivery: 1 set = 4 pieces



Mounting panels

Model	Order no.	Note
E-M	25000100*	For E 410-E 420
E-M	25000200*	For E 430-E 435
E-M	25000400*	For E 440-E 445
E-M	25000300*	For E 450-E 470, for E 434 S

Scope of delivery: 1 mounting panel

Note: * = Available on request



Lid assembly kit from above

Model	Order no.	Note
E-D0	25000500*	For E 430
E-D0	25000600*	For E 435
E-D0	25000700*	For E 440
E-D0	25000800*	For E 445
E-D0	25000910*	For E 450
E-D0	25001000*	For E 460
E-D0	25001100*	For E 470

Scope of delivery: Lid assembly kit from above, 4 screws including inserts for the base



Rubber feet

Model	Order no.	Colour	Note
EG-GF	25002100	Grey	Foam, for E 406-E 435; for EG...
E-F	25002200	White	Rubber, 67 Shore, for E 440-E 470, for E 434 S

Scope of delivery: 1 set = 4 pieces

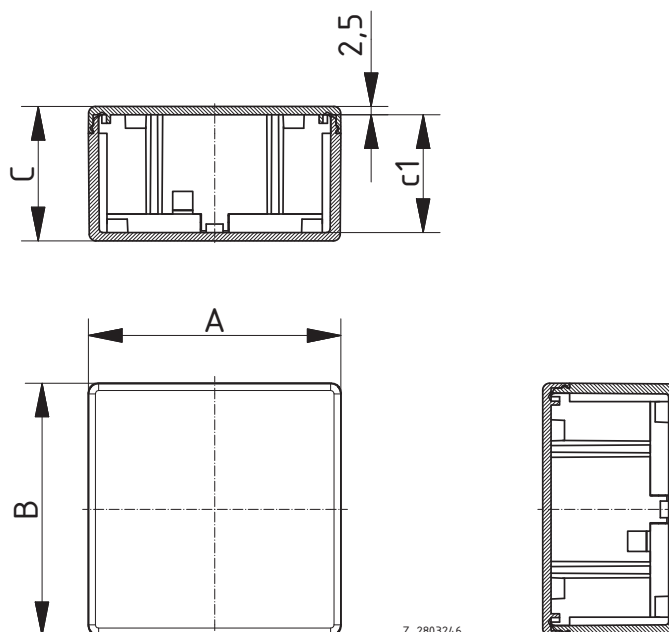
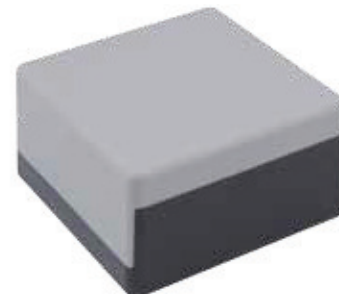
Universal

Enclosure with snap lock

Model	Order no.	A	B	C	c1
U 50	06050000	50	50	30	25
U 75	06075000	75	75	40	35
U 100	06100000	100	100	60	55

Scope of delivery: Lid, base

Note: If required, the locking function can be permanently fixed by means of screws.



Z-2803246